

1 NET LIST

The listing on the following pages provides "Net List" information for the connectors on both sides of the station backplane board. The example in Figure 1 describes how to interpret the information.

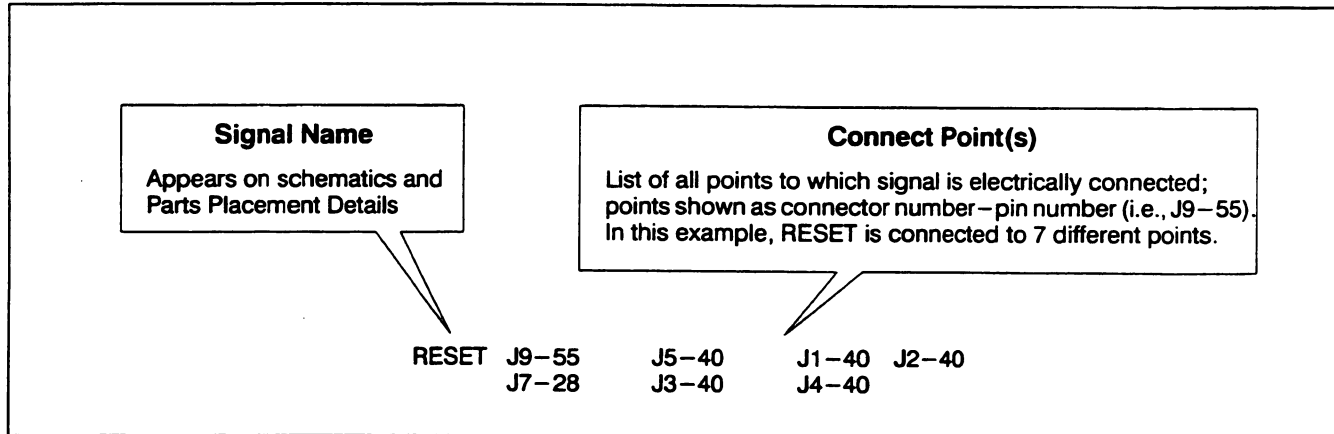


Figure 1. Interpreting Net List Information Example

Net List

RCLK3	J15-17	J8-42			ExtrnSpare#14	J6-70	J32-9		
LINE1-	J6-2	J17-26			ExtrnSpare#16	J6-72	J32-7		
AuxIn8	J6-34	J17-42			ETRTISLTGNDJ22-2	J22-3	J22-4	J22-5	
GenTxData-	J6-26	J17-34				J8-76	J8-80		
AuxOut3	J6-30	J17-38			Modem+	J8-2	J17-5		
AuxOut1	J6-28	J17-36			AGC1	J2-74	J7-74		
LINE4-	J6-20	J17-29			1PPS	J8-74	J21-1		
LINE2-	J6-8	J17-27			DLAN2-	J8-12	J18-5	J18-9	
AuxIn2	J6-58	J17-12			DLAN1-	J8-10	J19-5	J19-9	
AuxIn6	J6-54	J17-16			DCD1	J8-54	J20-1		
AuxOut7-Rlay+	J6-52	J17-18			Async-	J8-56	J20-6		
AuxOut9-Rlay+	J6-50	J17-20			ETHERNET	J22-1	J8-78		
AuxIn9-opto+	J6-48	J17-22			A3	J5-60	J1-60	J2-60	J7-46
AuxIn11-opto+	J6-46	J17-24				J3-60	J4-60		
AuxIn4	J6-56	J17-14			TDMCLOCK	J39-8	J5-46	J1-46	J2-46
RxD1	J8-50	J20-2				J7-34	J3-46	J4-46	
CTS1	J8-52	J20-8			TDMFRAMESYNC		J39-6	J5-44	J1-44
Y2MUX	J38-55	J9-45				J2-44	J7-32	J3-44	J4-44
Y3MUX	J38-57	J9-47			SPI MOSI	J9-53	J5-38	J1-38	J2-38
BMUXCTRL	J38-59	J9-49				J7-26	J3-38	J4-38	
SPARE#2	J38-61	J9-57	J5-48	J1-48	WFI-	J8-8	J19-3	J19-7	J18-3
	J2-48	J7-36	J3-48	J4-48		J18-7			
SPARE#3	J38-62	J9-58	J5-49	J1-49	ExtrnSpare#4	J5-8	J1-8	J2-8	J31-7
	J2-49	J7-37	J3-49	J4-49		J3-8	J4-8		
Overvoltage	J38-67	J33-5			ExtrnSpare#6	J5-10	J1-10	J2-10	J31-5
VdrverFORWRD	J38-38	J9-21				J3-10	J4-10		
VfinalRFLCTD	J38-39	J9-22			HDL CBUSY	J39-3	J5-42	J1-42	J2-42
Vcontrol	J38-32	J9-15	J9-16	J9-17		J7-30	J3-42	J4-42	
	J9-18				FinalPATemp	J38-70	J37-1		
LINE3-	J6-14	J17-28			AC_Fail	J38-72	J33-6		
Modem-	J8-1	J17-30			TX16.8MHZREF	J9-70	J5-66	J7-56	J4-66
LnPTTDt(GCC)	J8-16	J14-10			RxD3	J15-3	J8-34		
SPARE#4	J9-60	J5-50	J1-50	J2-50	RmteLopbck3	J15-21	J8-44		
	J7-38	J3-50	J4-50		RSSI(GCC)	J8-24	J14-6		
RESET	J9-55	J5-40	J1-40	J2-40	MnitrDt(GCC)	J8-20	J14-8		
	J7-28	J3-40	J4-40		DataRx(GCC)	J8-22	J14-7		
ExtrnSpare#8	J5-12	J1-12	J2-12	J31-3	CCI/Monitor	J8-64	J14-24		
	J3-12	J4-12			PTT	J8-60	J14-11		
ExtrnSpare#2	J5-6	J1-6	J2-6	J31-9	Mute/PLStrip	J8-62	J14-23		
	J3-6	J4-6			SerialID	J8-58	U1-2		
HST_REQ	J9-67	J7-50			GenTxData+	J6-64	J17-9		
SPARE#6	J9-62	J5-52	J1-52	J2-52	AuxIn10-opto-	J6-42	J17-48		
	J7-40	J3-52	J4-52		AuxOut5	J6-32	J17-40		
XMITSPIREQ	J9-65	J7-48			AuxIn12-opto-	J6-44	J17-50		
SPARE#1	J38-60	J9-56	J5-47	J1-47	AuxIn1	J6-60	J17-11		
	J2-47	J7-35	J3-47	J4-47	PL+In	J6-62	J17-10		
DATA*1	J2-78	J7-78			A1(CS2)	J5-54	J1-54	J2-54	J7-42
DATA*2	J7-70	J4-78				J3-54	J4-54		
ODC2	J7-68	J4-75			A5	J5-56	J1-56	J2-56	J7-44
SBI1	J2-76	J7-76				J3-56	J4-56		
5MHZREF	J30-1	J5-70	J7-64	J4-70	A2	J5-62	J1-62	J2-62	J7-47
						J3-62	J4-62		

A4	J5-58	J1-58	J2-58	J7-45	GND	J9-51	J9-68	J9-69	J9-71
	J3-58	J4-58				J9-72	J9-73	J9-74	J9-75
VCOAUDIO	J9-78	J7-60				J9-76	J9-79	J9-80	J15-1
13.8V	J38-4	J38-5	J38-6	J38-7		J15-7	J8-5	J8-6	
	J38-8	J38-9	J38-10	J38-11	GND	J8-13	J8-14	J8-26	J8-27
	J9-3	J9-5	J9-6	J9-7		J8-28	J8-29	J8-30	J8-31
	J9-8	J9-9	J9-10			J8-38	J8-45	J8-46	J8-47
13.8V	J5-22	J5-23	J5-24	J5-25		J8-48	J8-55	J8-65	
	J5-26	J1-22	J1-23	J1-24	GND	J8-66	J8-70	J8-71	J8-72
	J1-25	J1-26	J2-22	J2-23		J8-73	J8-75	J8-77	J8-79
	J2-24	J2-25	J2-26			J5-1	J5-2	J5-3	J5-4
13.8V	J7-5	J7-6	J7-7	J7-8		J5-18	J5-19	J5-20	
	J31-6	J33-1	J33-2	J17-33	GND	J5-21	J5-35	J5-36	J5-57
	J3-22	J3-23	J3-24	J3-25		J5-59	J5-63	J5-64	J5-67
	J3-26	J4-22	J4-23			J5-68	J5-71	J5-72	J5-73
13.8V	J4-24	J4-25	J4-26			J5-79	J5-80	J6-38	
CTS3	J15-5	J8-36			GND	J6-53	J6-79	J6-80	J14-9
Lcallopback3	J15-18	J8-40				J14-16	J14-17	J14-18	J14-19
ExtrnSpare#12	J5-16	J1-16	J2-16	J31-4		J14-20	J1-1	J1-2	J1-3
	J3-16	J4-16				J1-4	J1-18	J1-19	
ExtrnSpare#10	J5-14	J1-14	J2-14	J31-2	GND	J1-20	J1-21	J1-35	J1-36
	J3-14	J4-14				J1-59	J1-63	J1-64	J1-67
AuxOut8-Rlay-	J6-36	J17-44				J1-68	J1-71	J1-72	J1-73
AuxOut10-Rlay-	J6-40	J17-46				J1-79	J1-80	J2-1	
5V	J38-20	J38-21	J38-22	J38-23	GND	J2-2	J2-3	J2-4	J2-18
	J38-24	J38-25	J38-26	J38-27		J2-19	J2-20	J2-21	J2-35
	J9-11	J9-12	J5-27	J5-28		J2-36	J2-59	J2-61	J2-63
	J5-29	J5-30	J5-31			J2-64	J2-67	J2-68	
5V	J5-32	J5-33	J5-34	J1-27	GND	J2-71	J2-72	J2-73	J2-79
	J1-28	J1-29	J1-30	J1-31		J2-80	J23-1	J23-3	J7-1
	J1-32	J1-33	J1-34	J2-27		J7-2	J7-3	J7-4	J7-23
	J2-28	J2-29	J2-30			J7-24	J7-51	J7-52	
5V	J2-31	J2-32	J2-33	J2-34	GND	J7-53	J7-54	J7-57	J7-58
	J7-9	J7-10	J7-11	J7-12		J7-61	J7-62	J7-65	J7-66
	J7-13	J7-14	J7-15	J7-16		J7-72	J7-73	J7-79	J7-80 U1-1
	J7-17	J7-18	J7-19			U1-3	J21-2		
5V	J7-20	J7-21	J7-22	J31-8	GND	J21-3	J21-4	J21-5	J19-1
	J17-8	J3-27	J3-28	J3-29		J18-1	J20-5	J31-1	J31-10
	J3-30	J3-31	J3-32	J3-33		J33-3	J33-4	J37-5	J17-7
	J3-34	J4-27	J4-28			J17-32	T331-1	J3-1	
5V	J4-29	J4-30	J4-31	J4-32	GND	J3-2	J3-3	J3-4	J3-18
	J4-33	J4-34				J3-19	J3-20	J3-21	J3-35
EXTWMVf	J34-1	J9-25				J3-36	J3-57	J3-63	J3-64
GND	J30-3	J30-4	J30-5	J39-1		J3-67	J3-68	J3-71	
	J39-5	J39-9	J38-1	J38-2	GND	J3-72	J3-73	J3-79	J3-80
	J38-3	J38-12	J38-13	J38-14		J4-1	J4-2	J4-3	J4-4
	J38-15	J38-16	J38-17			J4-18	J4-19	J4-20	J4-21
GND	J38-18	J38-19	J38-28	J38-29		J4-35	J4-36	J4-57	
	J38-30	J38-31	J38-33	J38-34	GND	J4-61	J4-63	J4-64	J4-67
	J38-35	J38-42	J38-43	J38-44		J4-68	J4-71	J4-72	J4-73
	J38-45	J38-46	J38-47			J4-79	J4-80	MH30-1	MH29-1
GND	J38-48	J38-49	J38-50	J38-63		MH31-1	MH28-1	MH32-1	
	J38-64	J38-65	J38-73	J38-74	Y1MUX	J38-53	J9-43		
	J38-75	J38-76	J38-77	J38-78	AuxIn10-opto+	J6-49	J17-23		
	J36-3	J34-2	J34-3		AuxOut10-Rlay+	J6-51	J17-21		
GND	J35-2	J35-3	J9-1	J9-2	TxPLInbtGCC	J8-15	J14-5		
	J9-13	J9-14	J9-23	J9-24	DATA1	J2-77	J7-77		
	J9-27	J9-29	J9-30	J9-39	ODC1	J2-75	J7-75		
	J9-40	J9-41	J9-50		SBI2	J7-69	J4-76		
					ExtrnSpare#1	J5-5	J1-5	J2-5	J32-5
						J3-5	J4-5		

ExtrnSpare#5	J5-9 J3-9	J1-9 J4-9	J2-9	J32-1	PTTREQ	J9-66	J7-49		
ExtrnSpare#7	J5-11 J3-11	J1-11 J4-11	J2-11	J32-2	REFAUDIO	J9-77	J7-59		
ExtrnSpare#15	J6-71	J32-10			TXDta+/TXAudio	J8-67	J14-13		
ExtrnSpare#13	J6-69	J32-8			RSTATPtchlh	J8-63	J14-25		
TXWIDEBNDADIO	J5-69 J7-63	J1-69 J3-69	J2-69		TSTATRXCarir	J8-59	J14-12		
X3MUX	J38-56	J9-46			TxD3	J15-2	J8-33		
X2MUX	J38-54	J9-44			DSR3	J15-6	J8-37		
AMUXCTRL	J38-58	J9-48			DCD3	J15-8	J8-39		
VfinalFORWRD	J38-36	J9-19			TCLK3	J15-15	J8-41		
PATEMP	J38-37	J9-20			DTR3	J15-20	J8-43		
DATA2	J7-71	J4-77			SizeRlas(GCC)	J8-17	J14-4		
AGC2***	J7-67	J4-74			RxMute(GCC)	J8-19	J14-3		
DLAN1+	J8-9	J19-4	J19-8		DataPTT(GCC)	J8-21	J14-2		
RTS1	J8-53	J20-7			DataTx(GCC)	J8-23	J14-1		
RngIndcatr	J8-49	J20-9			TXData-	J8-69	J14-21		
Async+	J8-57	J20-4			RTS3	J15-4	J8-35		
TxD1	J8-51	J20-3			AUXCarrier	J8-61	J14-14		
SPIMISO	J9-52 J7-25	J5-37 J3-37	J1-37 J4-37	J2-37	AuxOut8-Rlay+	J6-57	J17-19		
HDLCCCLK	J39-4 J7-31	J5-43 J3-43	J1-43 J4-43	J2-43	AuxIn7	J6-59	J17-17		
HDLCDATA	J39-2 J7-29	J5-41 J3-41	J1-41 J4-41	J2-41	AuxIn5	J6-63	J17-15		
ExtrnSpare#3	J5-7 J3-7	J1-7 J4-7	J2-7	J32-3	AuxIn3	J6-65	J17-13		
LINE4+	J6-19	J17-4			AuxIn9-opto-	J6-39	J17-47		
LINE3+	J6-13	J17-3			ExtrnSpare#11	J5-15 J3-15	J1-15 J4-15	J2-15	J32-6
LINE2+	J6-7	J17-2			TDMDATA	J39-7 J7-33	J5-45 J3-45	J1-45 J4-45	J2-45
LINE1+	J6-1	J17-1			A0(CS1)	J5-53 J3-53	J1-53 J4-53	J2-53	J7-41
WFI+	J8-7 J18-6	J19-2	J19-6	J18-2	ExtrnSpare#9	J5-13 J3-13	J1-13 J4-13	J2-13	J32-4
DLAN2+	J8-11	J18-4	J18-8		RxAudio	J8-68 J2-17	J5-17 J3-17	J14-22 J4-17	J1-17
FnlPAVrfctd	J38-69	J37-2			ANTRYKEYDA+	J9-31	J23-2		
CirultrTemp	J38-71	J37-3			AuxIn11-opto-	J6-41	J17-49		
FnlPAVfrwr	J38-68	J37-4			AuxIn12-opto+	J6-43	J17-25		
DrvrPAVfrwr	J38-66	J36-2			RXPLDET	J8-25	J14-15		
RX16.8MHZREF	J5-65 J3-65	J1-65 J4-65	J2-65	J7-55	AuxOut7-Rlay-	J6-35	J17-43		
SPICLK	J9-54 J7-27	J5-39 J3-39	J1-39 J4-39	J2-39	AuxOut9-Rlay-	J6-37	J17-45		
SPARE#5	J9-61 J7-39	J5-51 J3-51	J1-51 J4-51	J2-51	PL-In	J6-27	J17-35		
SPIGRANT	J9-59	J7-43			AuxOut2	J6-29	J17-37		
					AuxOut4	J6-31	J17-39		
					AuxOut6	J6-33	J17-41		
					EXTWMVr	J35-1	J9-26		
					X1MUX	J38-52	J9-42		

THIS PAGE INTENTIONALLY LEFT BLANK

2 CONNECTOR PINOUT INFORMATION

Figure 2 shows the backplane board viewed from the rear with all connectors labeled. The tables on the facing page provide pinout information for each corresponding connector.

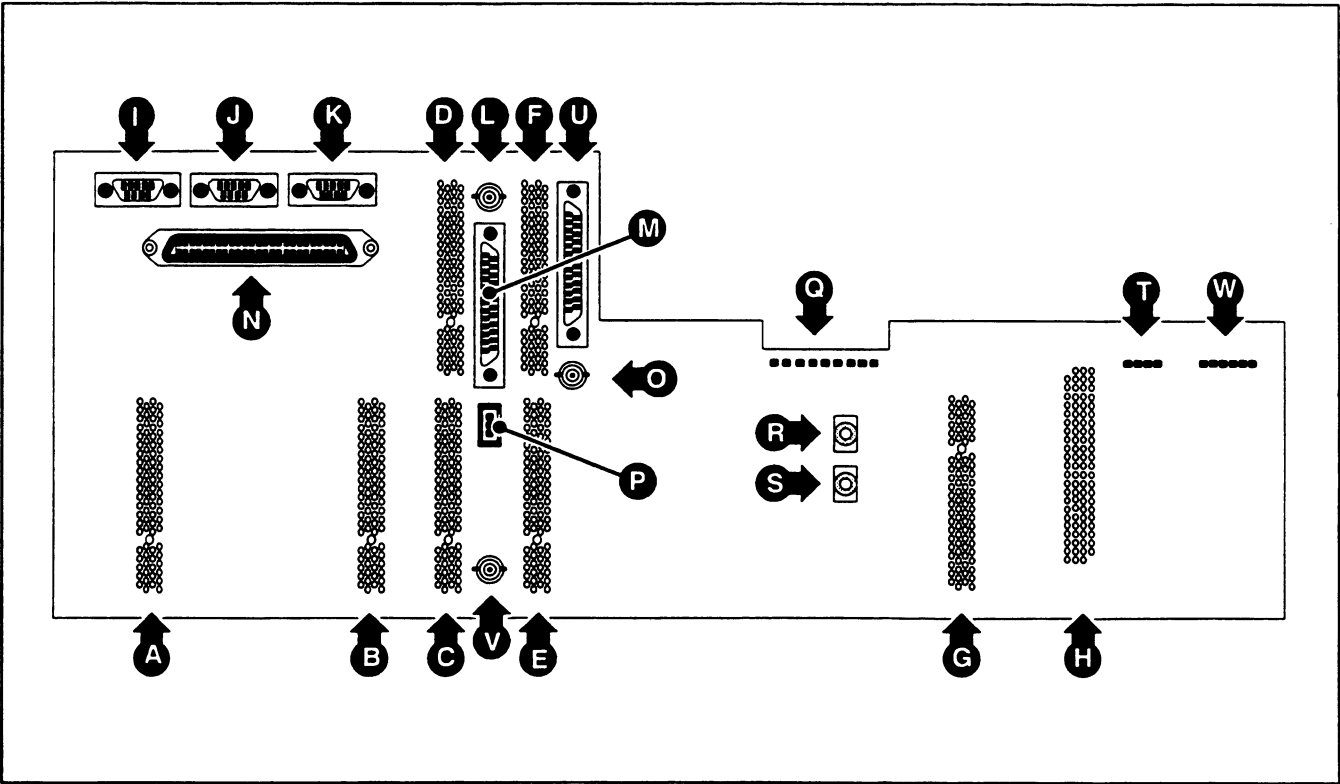


Figure 2. Quantro Backplane Connectors

A J2 RECEIVER #1

Pin #	Signal Name
1	GND
2	GND
3	GND
4	GND
5	External Spare #1
6	External Spare #2
7	External Spare #3
8	External Spare #4
9	External Spare #5
10	External Spare #6
11	External Spare #7
12	External Spare #8
13	External Spare #9
14	External Spare #10
15	External Spare #11
16	External Spare #12
17	Rx WIDEBAND AUDIO
18	GND
19	GND
20	GND
21	GND
22	14.2V
23	14.2V
24	14.2V
25	14.2V
26	14.2V
27	5V
28	5V
29	5V
30	5V
31	5V
32	5V
33	5V
34	5V
35	GND
36	GND
37	SPIMISO
38	SPIMOSI
39	SPICLK
40	ALT_RESET
41	HDLC DATA
42	HDLC BUSY
43	HDLC CLK
44	TDM FRAME SYNC
45	TDM DATA
46	TDM CLOCK
47	SPARE #1
48	SPARE #2
49	SPARE #3
50	SPARE #4
51	SPARE #5
52	SPARE #6
53	A0 (CS1)
54	A1 (CS2)
55	OPEN
56	A5
57	GND
58	A4
59	GND
60	A3
61	OPEN
62	A2
63	GND
64	GND
65	RX 2.1 MHz REF
66	TX 2.1 MHz REF
67	GND
68	GND
69	TX WIDEBAND AUDIO
70	5 MHz REF
71	GND
72	GND
73	GND
74	AGC 1
75	ODC 1
76	SBI 1
77	DATA 1
78	DATA *1
79	GND
80	GND

B J4 RECEIVER #2/UHSO

Pin #	Signal Name
1	GND
2	GND
3	GND
4	GND
5	External Spare #1
6	External Spare #2
7	External Spare #3
8	External Spare #4
9	External Spare #5
10	External Spare #6
11	External Spare #7
12	External Spare #8
13	External Spare #9
14	External Spare #10
15	External Spare #11
16	External Spare #12
17	Rx WIDEBAND AUDIO
18	GND
19	GND
20	GND
21	GND
22	14.2V
23	14.2V
24	14.2V
25	14.2V
26	14.2V
27	5V
28	5V
29	5V
30	5V
31	5V
32	5V
33	5V
34	5V
35	GND
36	GND
37	SPIMISO
38	SPIMOSI
39	SPICLK
40	ALT_RESET
41	HDLC DATA
42	HDLC BUSY
43	HDLC CLK
44	TDM FRAME SYNC
45	TDM DATA
46	TDM CLOCK
47	SPARE #1
48	SPARE #2
49	SPARE #3
50	SPARE #4
51	SPARE #5
52	SPARE #6
53	A0 (CS1)
54	A1 (CS2)
55	OPEN
56	A5
57	GND
58	A4
59	GND
60	A3
61	OPEN
62	A2
63	GND
64	GND
65	RX 2.1 MHz REF
66	TX 2.1 MHz REF
67	GND
68	GND
69	TX WIDEBAND AUDIO
70	5 MHz REF
71	GND
72	GND
73	GND
74	AGC 2 ***
75	ODC 2
76	SBI 2
77	DATA 2
78	DATA* 2
79	GND
80	GND

C J5 WIRELINE INTERFACE BOARD

Pin #	Signal Name
1	GND
2	GND
3	GND
4	GND
5	External Spare #1
6	External Spare #2
7	External Spare #3
8	External Spare #4
9	External Spare #5
10	External Spare #6
11	External Spare #7
12	External Spare #8
13	External Spare #9
14	External Spare #10
15	External Spare #11
16	External Spare #12
17	Rx WIDEBAND AUDIO
18	GND
19	GND
20	GND
21	GND
22	14.2V
23	14.2V
24	14.2V
25	14.2V
26	14.2V
27	5V
28	5V
29	5V
30	5V
31	5V
32	5V
33	5V
34	5V
35	GND
36	GND
37	SPIMISO
38	SPIMOSI
39	SPICLK
40	ALT_RESET
41	HDLC DATA
42	HDLC BUSY
43	HDLC CLK
44	TDM FRAME SYNC
45	TDM DATA
46	TDM CLOCK
47	SPARE #1
48	SPARE #2
49	SPARE #3
50	SPARE #4
51	SPARE #5
52	SPARE #6
53	A0 (CS1)
54	A1 (CS2)
55	OPEN
56	A5
57	GND
58	A4
59	GND
60	A3
61	OPEN
62	A2
63	GND
64	GND
65	RX 2.1 MHz REF
66	TX 2.1 MHz REF
67	GND
68	GND
69	TX WIDEBAND AUDIO
70	5 MHz REF
71	GND
72	GND
73	GND
74	OPEN
75	OPEN
76	OPEN
77	OPEN
78	OPEN
79	GND
80	GND

D J6 WIRELINE INTERFACE BOARD

Pin #	Signal Name
1	GND
2	LINE 1+
3	GND
4	OPEN
5	OPEN
6	OPEN
7	LINE 2+
8	LINE 2-
9	5V
10	OPEN
11	OPEN
12	OPEN
13	LINE 3+
14	LINE 3-
15	OPEN
16	OPEN
17	OPEN
18	OPEN
19	GND
20	GND
21	GND
22	OPEN
23	OPEN
24	OPEN
25	OPEN
26	Gen Tx Data +
27	PL-In
28	Aux Out 1 (Fallsort Ind)
29	Aux Out 2 (Rx Code Det)
30	Aux Out 3
31	Aux Out 4
32	Aux Out 5
33	Aux Out 6
34	Aux In 8
35	GND
36	GND
37	SPIMISO
38	SPIMOSI
39	SPICLK
40	ALT_RESET
41	HDLC DATA
42	HDLC BUSY
43	HDLC CLK
44	TDM FRAME SYNC
45	TDM DATA
46	TDM CLOCK
47	SPARE #1
48	SPARE #2
49	SPARE #3
50	SPARE #4
51	SPARE #5
52	SPARE #6
53	A0 (CS1)
54	A1 (CS2)
55	OPEN
56	A5
57	GND
58	A4
59	GND
60	A3
61	OPEN
62	A2
63	GND
64	GND
65	RX 2.1 MHz REF
66	TX 2.1 MHz REF
67	GND
68	GND
69	TX WIDEBAND AUDIO
70	5 MHz REF
71	GND
72	GND
73	GND
74	OPEN
75	OPEN
76	OPEN
77	OPEN
78	OPEN
79	GND
80	GND

E J7 STATION CONTROL

Pin #	Signal Name
1	GND
2	GND
3	GND
4	GND
5	14.2V
6	14.2V
7	14.2V
8	14.2V
9	5V
10	5V
11	5V
12	5V
13	5V
14	5V
15	5V
16	5V
17	5V
18	5V
19	5V
20	5V
21	5V
22	5V
23	GND
24	GND
25	SPIMISO
26	GND
27	SPI CLK
28	ALT_RESET
29	HDLC DATA
30	HDLC BUSY
31	HDLC CLK
32	TDM FRAME SYNC
33	TDM DATA
34	TDM CLOCK
35	SPARE #1
36	SPARE #2
37	SPARE #3
38	SPARE #4
39	SPARE #5
40	SPARE #6
41	A0 (CS1)
42	A1 (CS2)
43	SPI GRANT
44	A5
45	A4
46	GND
47	A2
48	XMIT SPIREQ
49	PTT REQ
50	HOST_REQ
51	GND
52	GND
53	GND
54	GND
55	RX 2.1 MHz REF
56	TX 2.1 MHz REF
57	GND
58	GND
59	REF AUDIO
60	VCO AUDIO
61	OPEN
62	GND
63	MUTE
64	RSTAT
65	CC1
66	GND
67	AGC 2 ***
68	ODC 2
69	SBI 2
70	DATA* 2
71	GND
72	GND
73	GND
74	AGC 1
75	ODC 1
76	SBI 1
77	DATA 1
78	DATA* 1
79	GND
80	GND

F J8 STATION CONTROL

Pin #	Signal Name
1	FUNCTION
2	Modem +
3	Modem -
4	OPEN
5	OPEN
6	GND
7	GND
8	WFI+
9	WFI-
10	DLAN1+
11	DLAN1-
12	DLAN2+
13	DLAN2-GND
14	GND
15	PL Strip
16	AUX Indicate
17	Monitor
18	OPEN
19	OPEN
20	V Final FORWARD
21	PA TEMP
22	V Driver FORWARD
23	V Final REFLECTED
24	GND
25	GND
26	EXT WM VI
27	EXT WM Vt
28	EXT Ctrc Temp
29	GND
30	GND
31	GND
32	Modem Rat
33	EXT VO 1
34	EXT VO 2
35	DRIVER A_TUNE 1
36	DRIVER A_TUNE 2
37	CTSS
38	DSR3
39	GND
40	DCD3
41	Local Loopback 3
42	GND
43	TCLK3
44	RCLK3
45	DTR3
46	Remote Loopback 3
47	GND
48	GND
49	GND
50	Ring Indicator
51	RxD1
52	TxD1
53	CTS1
54	RTS1
55	DCD1
56	GND
57	DSR1
58	DTR1
59	Serial ID
60	TSTAT
61	PTT
62	OPEN
63	gnd*
64	gnd*
65	gnd*
66	PTT
67	PTT REQ
68	TX Data
69	HOST_REQ
70	GND
71	GND
72	GND
73	GND
74	1PPS
75	GND
76	GND
77	GND
78	ETHERNET ISOLATED GND
79	ETHERNET
80	ETHERNET ISOLATED GND

G J9 Exciter

Pin #	Signal Name
1	GND
2	GND
3	14.2V
4	28V
5	14.2V
6	14.2V
7	14.2V
8	14.2V
9	14.2V
10	14.2V
11	5V
12	5V
13	GND
14	GND
15	V control
16	V control
17	V control
18	V control
19	V Final FORWARD
20	PA TEMP
21	V Driver FORWARD
22	V Final REFLECTED
23	GND
24	GND
25	GND
26	EXT WM VI
27	EXT WM Vt
28	EXT Ctrc Temp
29	GND
30	GND
31	ANT RY KEYED A+
32	EXT VO 1
33	EXT VO 2
34	DRIVER A_TUNE 1
35	DRIVER A_TUNE 2
36	FINAL A_TUNE 1
37	FINAL A_TUNE 2
38	FAN_ON
39	GND
40	GND
41	GND
42	X1 MUX
43	Y1 MUX
44	X2 MUX
45	Y2 MUX
46	X3 MUX
47	Y3 MUX
48	A MUX CTRL
49	B MUX CTRL
50	GND
51	GND
52	SPIMISO
53	SPIMOSI
54	SPICLK
55	ALT_RESET
56	SPARE #1
57	SPARE #2
58	SPARE #3
59	SPARE #4
60	SPARE #5
61	SPARE #6
62	OPEN
63	gnd*
64	gnd*
65	gnd*
66	PTT
67	PTT REQ
68	TX Data
69	HOST_REQ
70	GND
71	GND
72	GND
73	GND
74	GND
75	GND
76	GND
77	GND
78	REF AUDIO
79	VCO AUDIO
80	GND

H J38 +5V / IPA

Pin #	Signal Name
1	GND
2	GND
3	GND
4	14.2V BUS
5	14.2V BUS
6	14V BUS
7	14.2V BUS
8	14.2V BUS
9	14.2V BUS
10	14.2V BUS
11	14.2V BUS
12	GND
13	GND
14	GND
15	GND
16	GND
17	GND
18	GND
19	GND
20	5V
21	5V
22	5V
23	5V
24	5V
25	5V
26	5V
27	5V
28	GND
29	GND
30	GND
31	GND
32	V control
33	GND
34	GND
35	GND
36	V final FORWARD
37	PA TEMP
38	V driver FORWARD
39	V final REFLECTED
40	
41	
42	GND
43	GND
44	GND
45	GND
46	GND
47	GND
48	GND
49	GND
50	GND
51	
52	
53	
54	X2 MUX
55	Y2 MUX
56	X3 MUX
57	Y3 MUX
58	A MUX CTRL
59	B MUX CTRL
60	SPARE #1
61	SPARE #2
62	SPARE #3
63	GND
64	GND
65	GND
66	Driver PA Wtorward
67	Overvoltage
68	Final PA Wtorward
69	Final PA Vreflected
70	Final PA Temp
71	Circulator Temp
72	AC Fail
73	GND
74	GND
75	GND
76	GND
77	GND
78	GND
79	